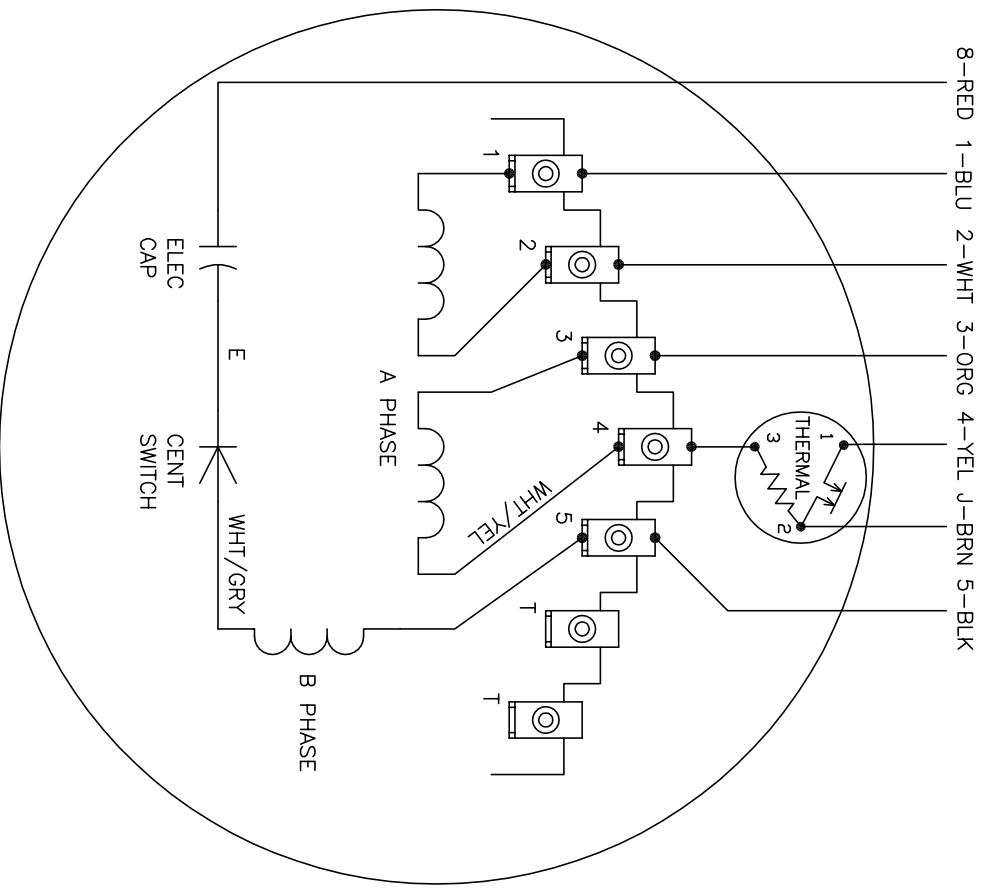


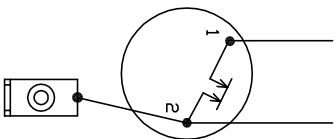
REV	ECON	DESCRIPTION	RELEASED BY	DATE
B		Added FLA Table	T. Raterman	12/18/07

	L1	L2	JOIN	JOIN	Voltage	
HIGH STD	1	4	2,3,8	J,5	230 V	Recommended
HIGH OPP	1	4	2,3,5	J,8		
LOW STD	1,3,8	4	-	2,J,5	115 V	Not Recommended
LOW OPP	1,3,5	4	-	2,J,8		



- NOTES:
1. STANDARD ROTATION IS CCW FACING END OPPOSITE SHAFT EXTENSION.
  2. MULTIPLE CAPACITORS ARE CONNECTED IN PARALLEL UNLESS OTHERWISE SPECIFIED.
  3. LEAD COLORS ARE OPTIONAL. LEADS MUST ALWAYS BE NUMBERED AS SHOWN.
  4. VST RECOMMENDS USING THE 230 V DUE TO 110 V HIGH POWER CONSUMPTION

CONNECTIONS FOR TWO-TERMINAL THERMAL  
4-YEL J-BRN



Blower Motor Data			
Voltage	FLA	HP	Phase
115 V	9.8	.5	Single
230 V	4.9		

**VST**  
**Vapor Systems Technologies, Inc.**  
Springboro, Ohio 45066 www.vsthose.com

TITLE  
ECS Membrane Processor  
Blower Single-Phase Wiring

SCALE none  
DWG NO. 5564-001

SHEET 1 OF 1

REV B