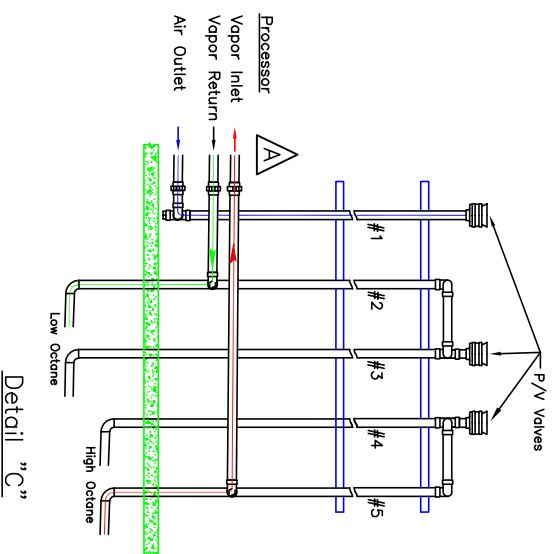
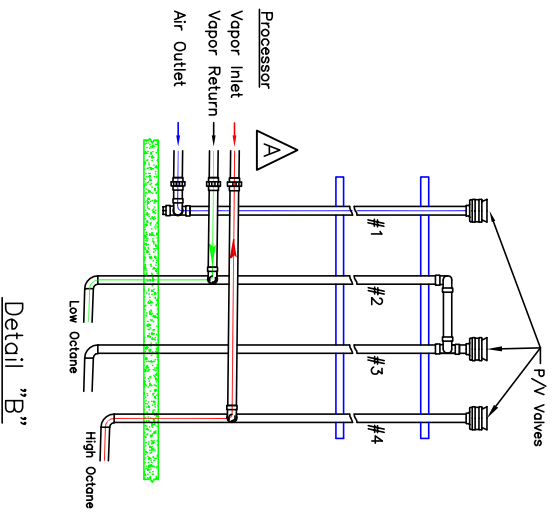
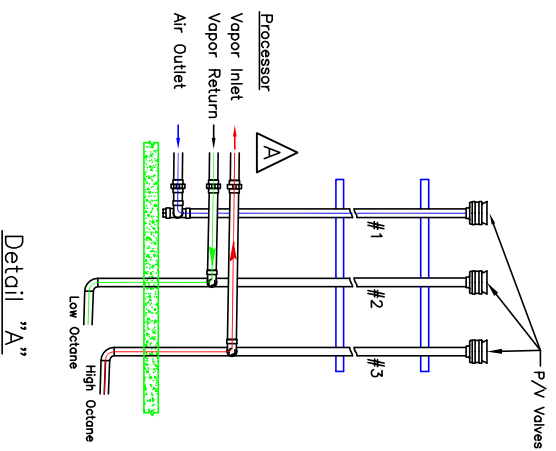



REV	ECH	DESCRIPTION	RELEASED BY	DATE
C		Added Flexible Connections	T. Roterman	4/10/08



Flexible connections between the Processor locking ball valves and the vent(s) is allowable if required by the local authority having jurisdiction to meet seismic requirements. Should the flexible connections be installed that is not supported, the slope of the flexible connections back to the vent(s) shall be greater than 1/8" per foot.

- **WARNING:** The Air Outlet riser (#1) out of the Processor MUST NEVER be manifolded together with other vent risers.
- **WARNING:** The two vent risers that connect to the Processor MUST NEVER be manifolded together, as this will short circuit the Processor.
- Detail "A" shows a two vent riser configuration. Manifolding of the vent risers #2 & #3 at the P/V valve can not be allowed, as this will short circuit the Processor.
- Detail "B" shows a three vent riser configuration. Two of the vent risers may be manifolded at the P/V valve as shown with #2 and #3 connected.
- Detail "C" shows a four vent riser configuration. The vent risers may manifold at the P/V valve as shown with #2 and #3 connected, and #4 and #5 connected.

 Vapor Systems Technologies, Inc. Springfield, Ohio 45066 www.vst hoses.com	
TITLE: Emissions Control system ECS Vent Riser Configurations	
SCALE: NONE	DWG NO: 5561-001
SHEET 1 OF 1	REV C