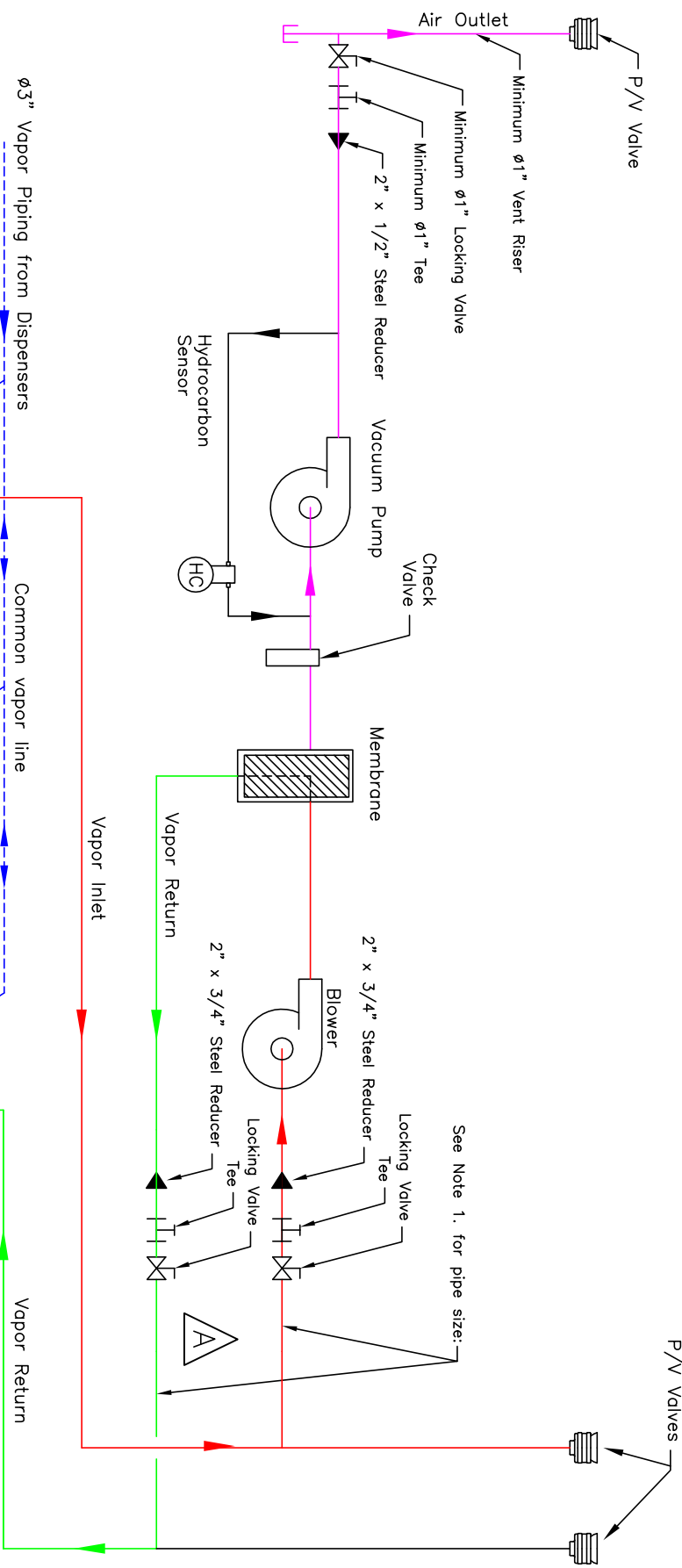


REV	ECH	DESCRIPTION	RELEASED BY	DATE
1		Added Flexible Connections	T. Roterman	4/10/08

Note 1. Minimum  $\phi 1"$  Dia for lengths  $< 10'$  from Processor to the vent risers  
 Minimum  $\phi 1-1/2"$  Dia. for lengths  $> 10'$  from the Processor to the vent risers  
 The three connections to the processor are  $2" \phi$ , NPT

Flexible connections between the Processor locking ball valves and the vent riser(s) are allowable if required by the local authority having jurisdiction to meet seismic requirements. Should the flexible connections be installed that is not supported, the slope of the flexible connections back to the vent(s) shall be greater than  $1/8"$  per foot.



**VST** Vapor Systems Technologies, Inc.  
 Springboro, Ohio 45066 www.vsthouse.com

**Emmissions Control System**  
**ECS Process Control Diagram**

TITLE: Emmissions Control System  
 SCALE: none  
 SHEET 1 OF 1

DWG NO.: 5501-001  
 REV: 1